

Ancubic Photon Mono M5

Details Always On

10.1 Inch 12K | Ancubic APP | Ancubic Photon Workshop 3.1

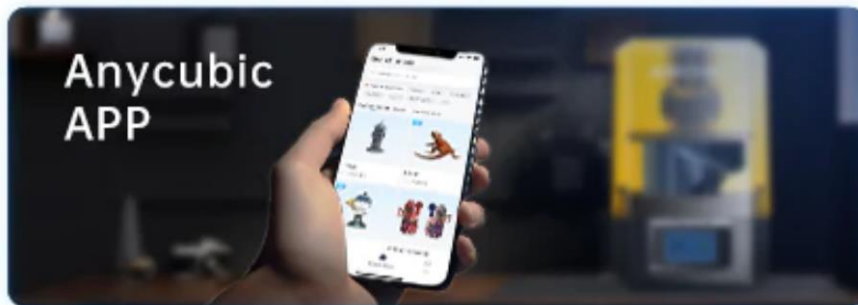


12K Exquisite Details

10.1-inch monochrome LCD screen

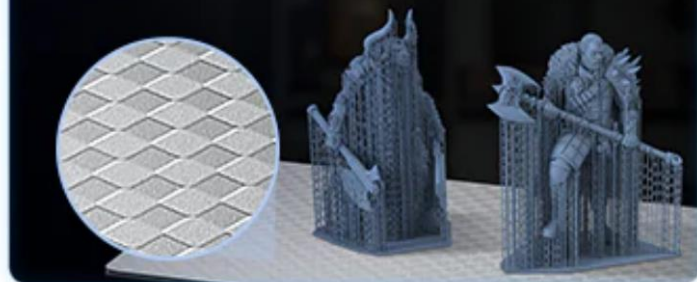


Anycubic APP



A Better Printing Experience

With Laser-Engraving Platform



11520×5120

Resolution



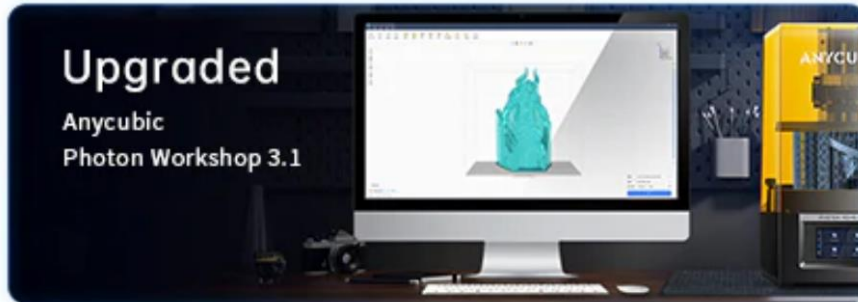
19 μ m

X pixel size



Upgraded

Anycubic
Photon Workshop 3.1



Printing Dimensions

218x123x200mm(HWD)



Stable Operation With The Dual Linear Rails



11520*5120

Resolution

10.1"

Monochrome
LCD Screen

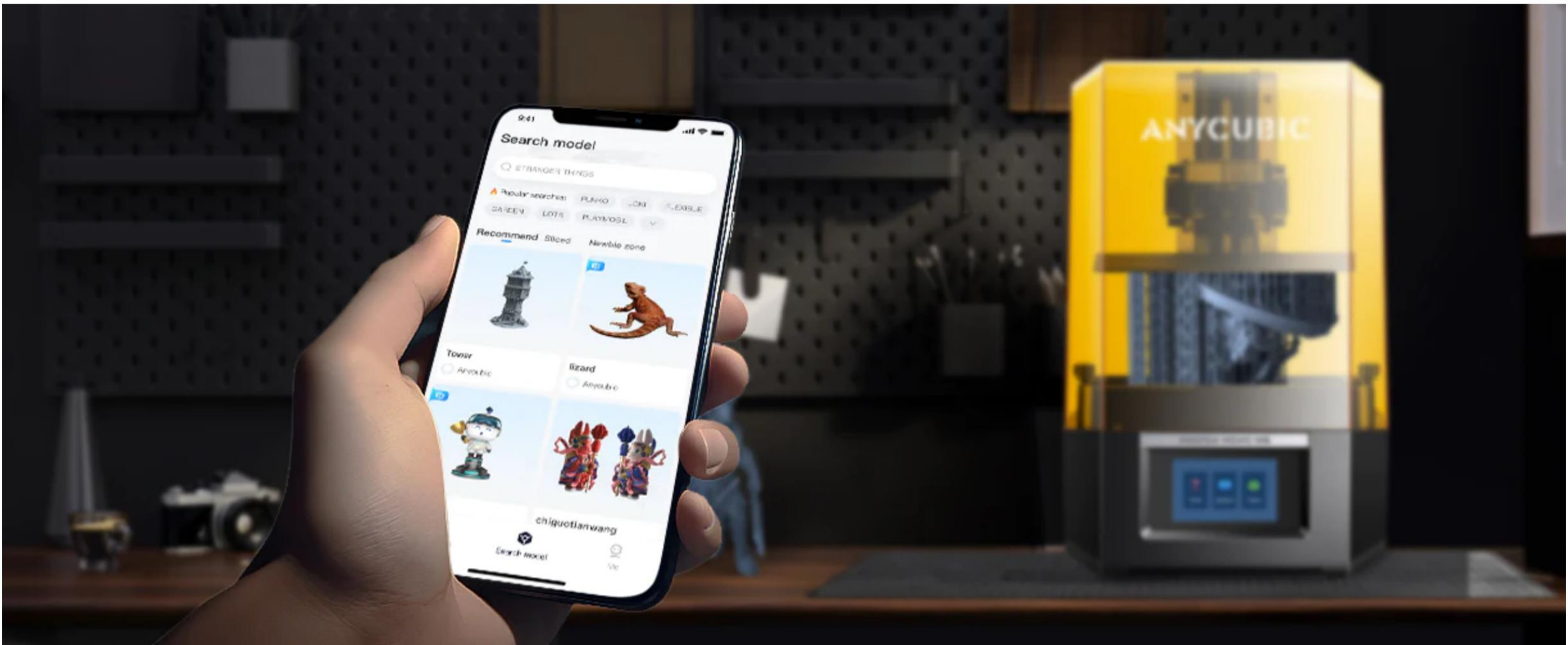
19 μ m

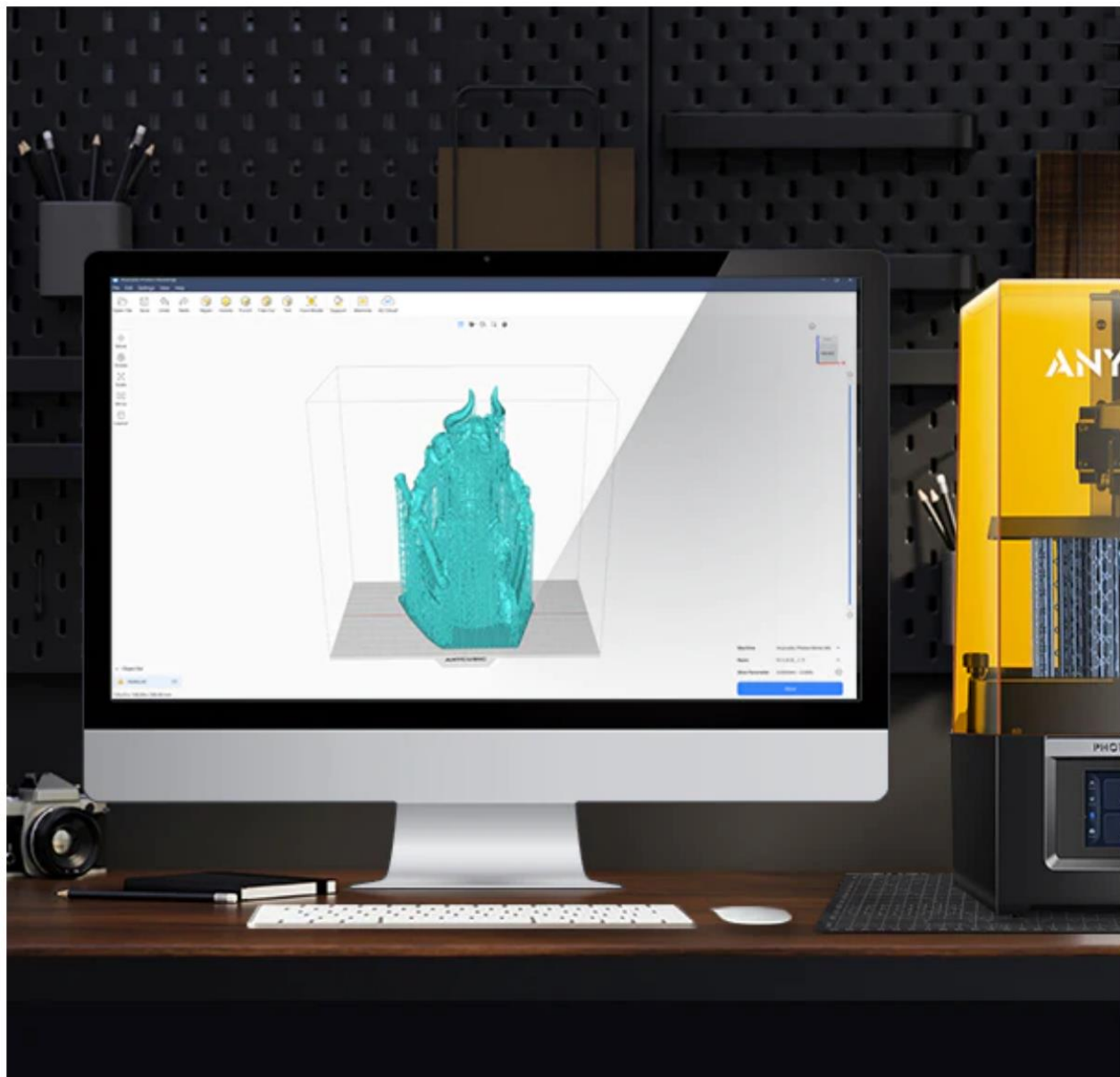
X Pixel Size

480:1

Contrast







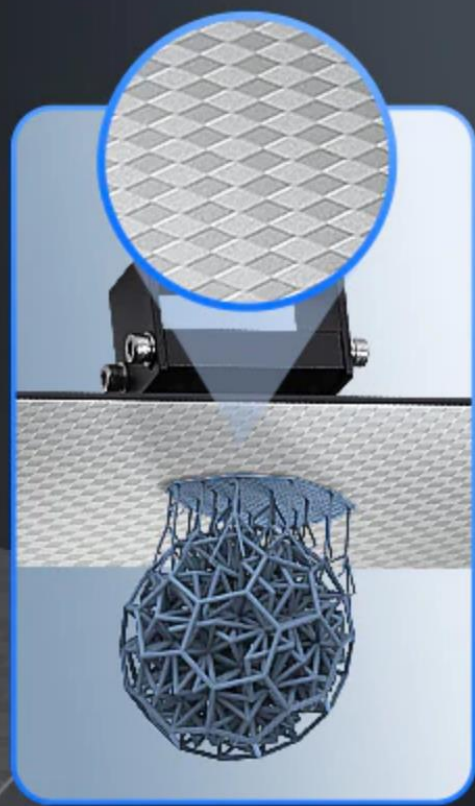
New support
algorithm and
bottom valve



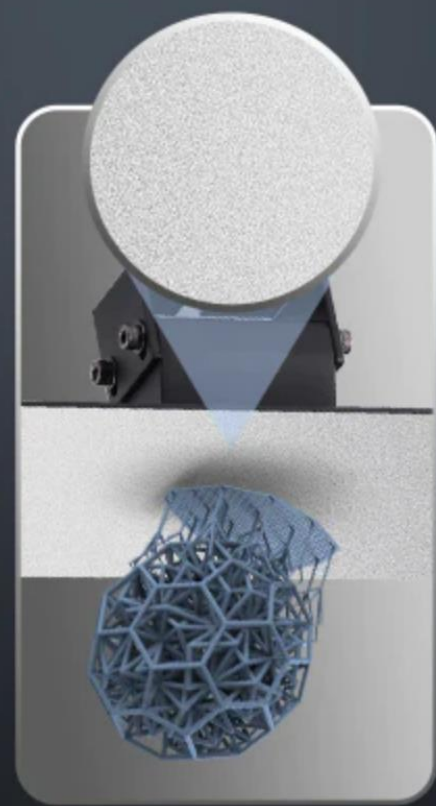
All-around
improvement



Professional
and easy to use

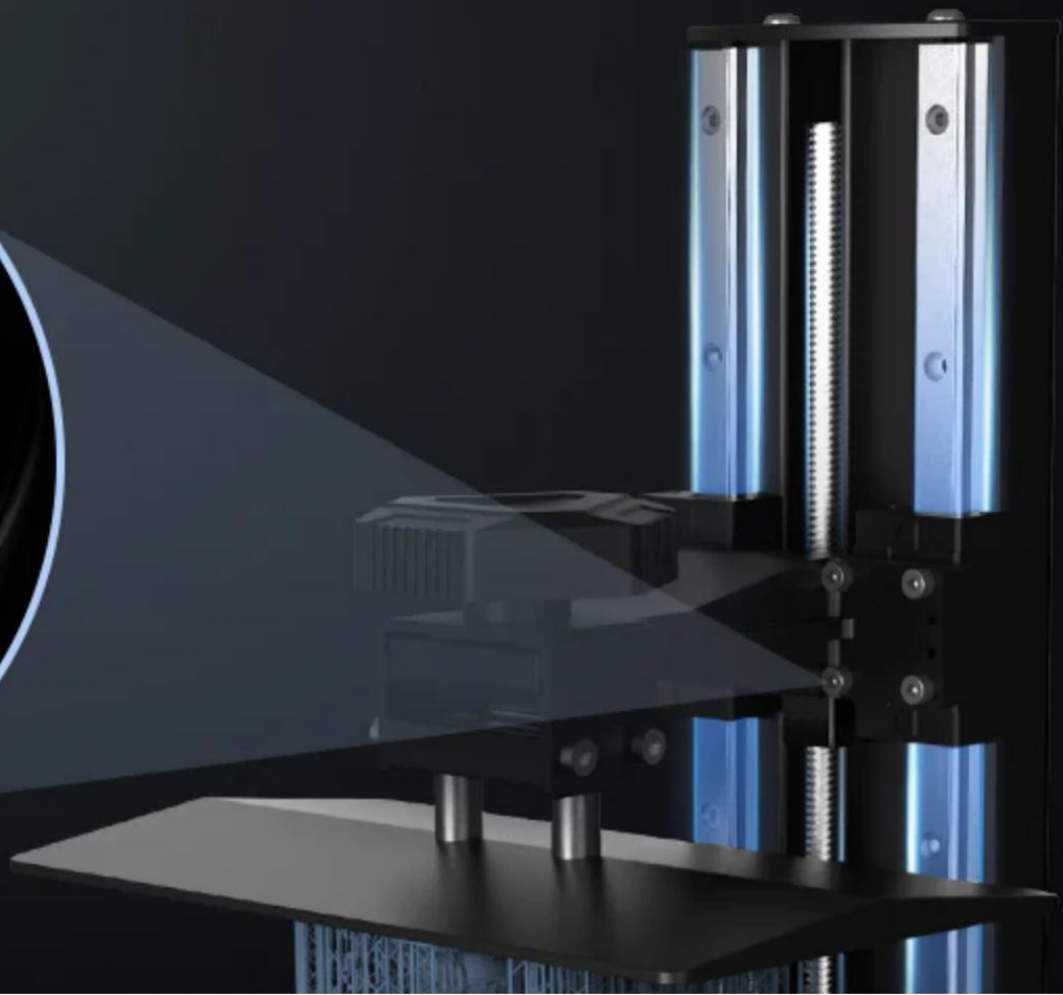
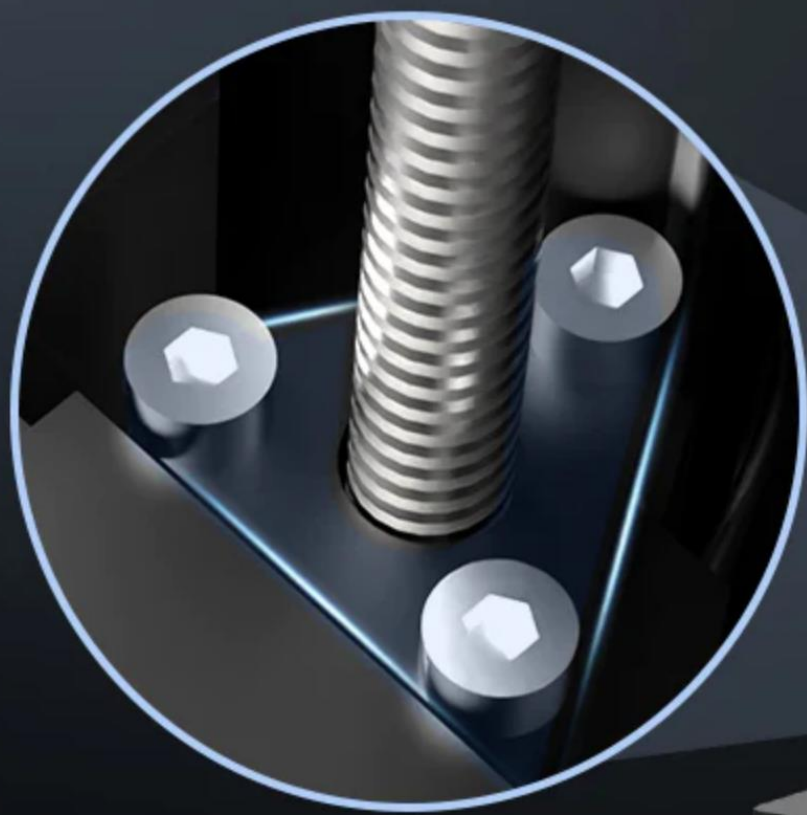


Laser-engraved Platform



Sandblasting Platform

*Based on the test results of Anycubic., for reference only.



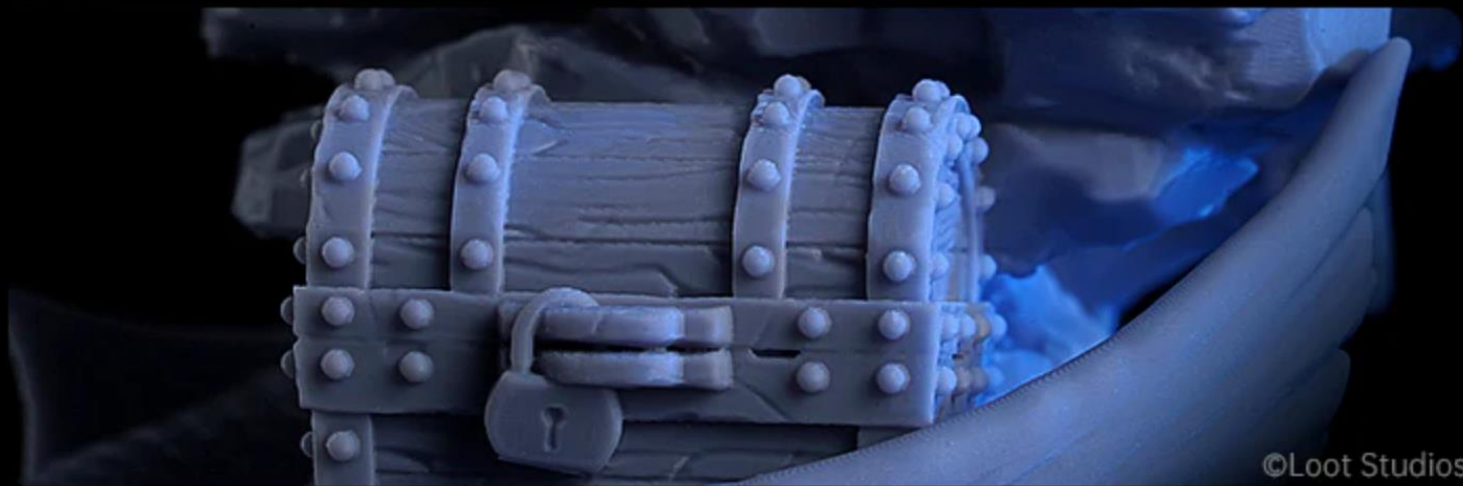
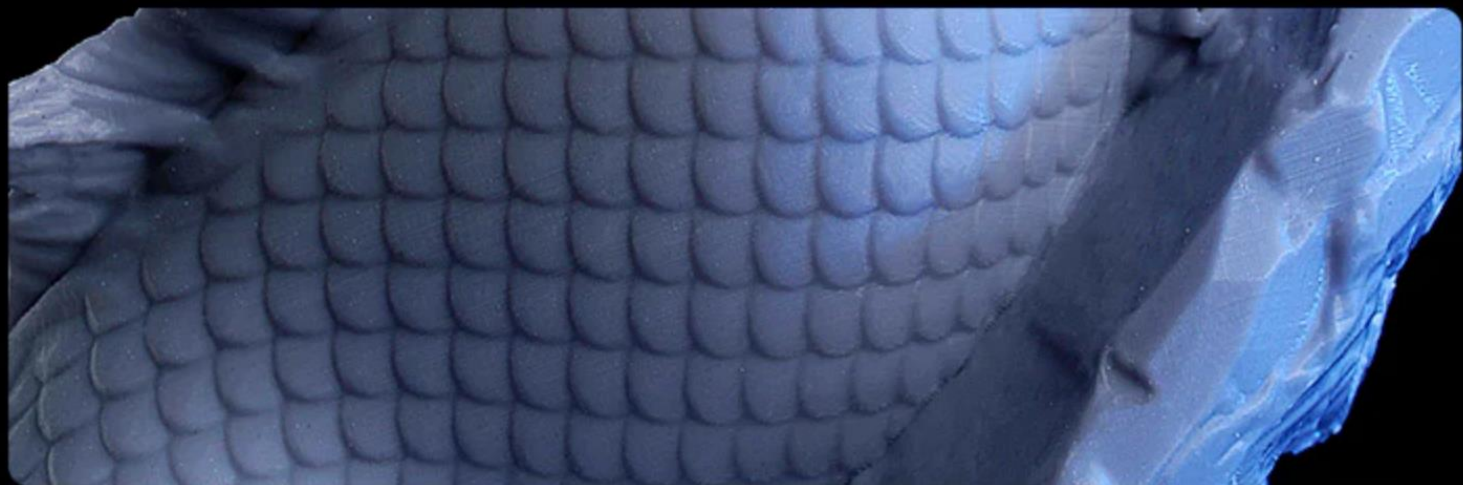


Models printed by Anycubic Photon Mono M5.

©Loot Studios



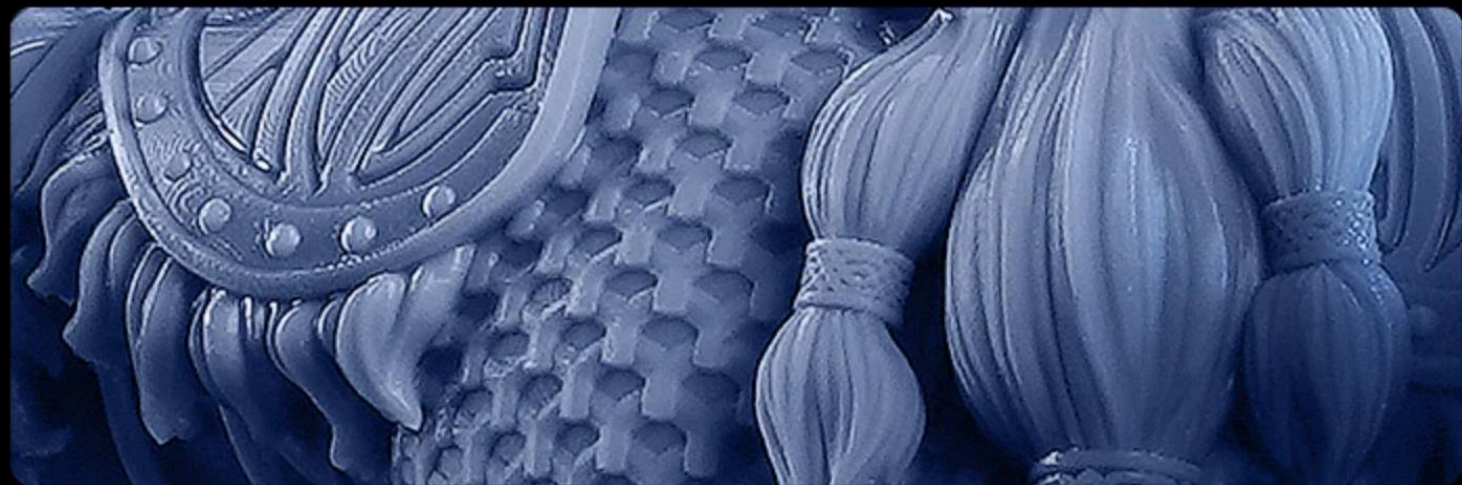
Models printed by Anycubic Photon Mono M5.



©Loot Studios



ANYCUBIC
Models printed by Anycubic Photon Mono M5.



Tech Specs

Machine Weight	19lb./8.6kg	Machine Dimensions	18.11x10.63x11.41in./ 460*270*290mm(HWD)
Printing Volume	190oz./5.4L	Printing Dimensions	7.87x8.58x4.84in./ 200x218x123mm(HWD)
Printing Speed	20-50mm/hr. or 0.78-1.97in./hr.	Machine Leveling	4-point manual leveling
Light Source	LED matrix UV light source	Z Axis	Double liners with 10 µm
Resin Vat	Unibody design with scale lines	Exposure Screen	10.1" monochrome 12K(11,520 x 5,120px) resolution 480:1 contrast ratio 4.7 % light transmittance 2,000 hours typical lifespan
Build Platform	Laser engraving aluminum alloy	Control Panel	4.3" TFT touch-control
Removable Cover	Effectively blocks UV radiation	Oversized Protection Film	Replaceable anti-scratch film
Power Supply	100W rated power	Data Input	USB Type-A 2.0、WIFI

Anycubic Photon Mono M5

In The Box

