

Anycubic Photon Mono M5s

Print Like a **Master**

10.1" 12K Screen | Leveling-free | 3X Faster



Smart, Simple and Efficient

Device Self-Check
Resin Detection
Full Monitoring



10.1-inch 12K



The 1st Consumer Grade Leveling-free



3X Print Speed

Average print speed 105mm/h



19 μ m X pixel size



11520*5120 Resolution



Anycubic APP



Anycubic Photon Workshop 3.1



11520*5120

Resolution

10.1"

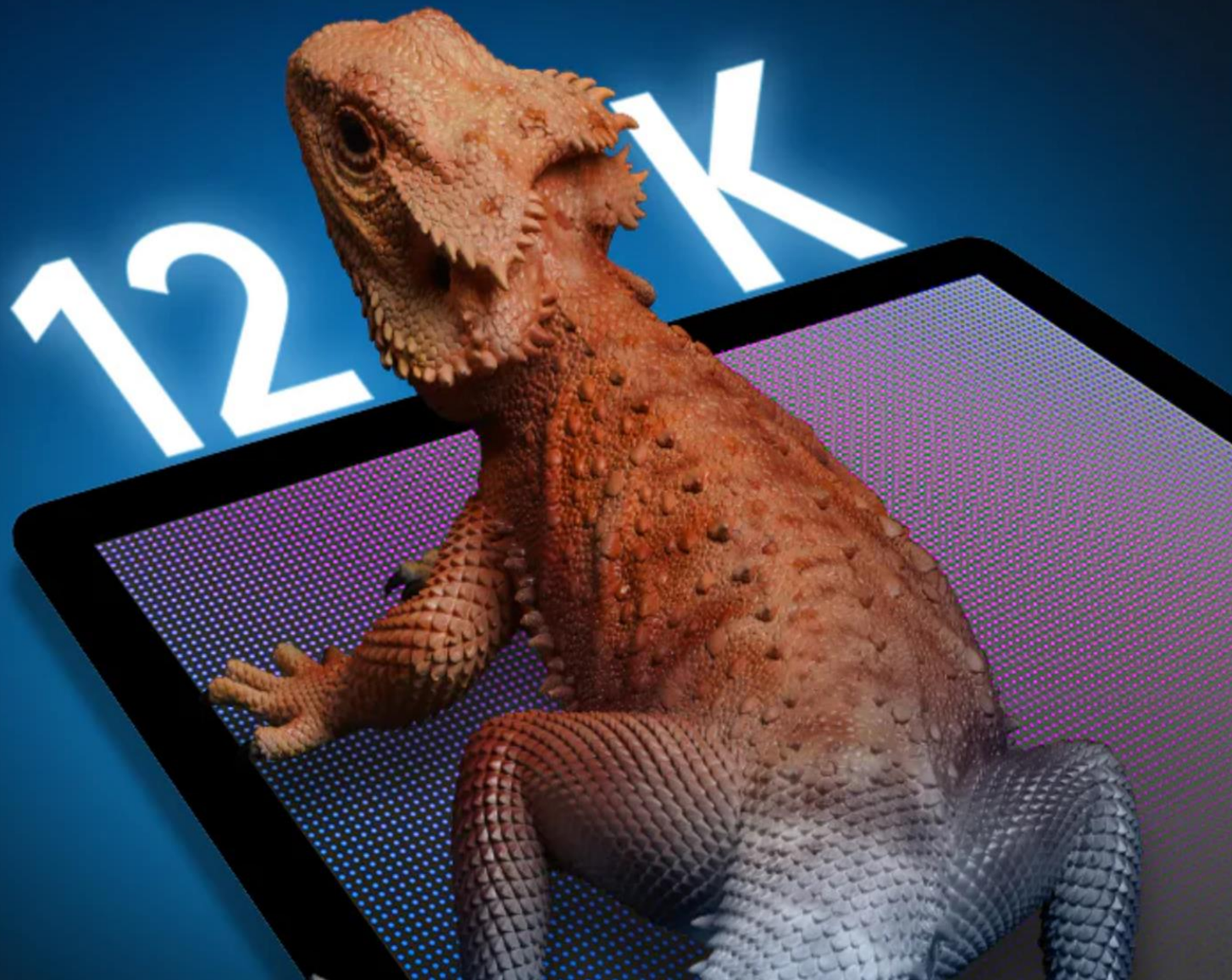
Monochrome
LCD Screen

19 μ m

X Pixel Size

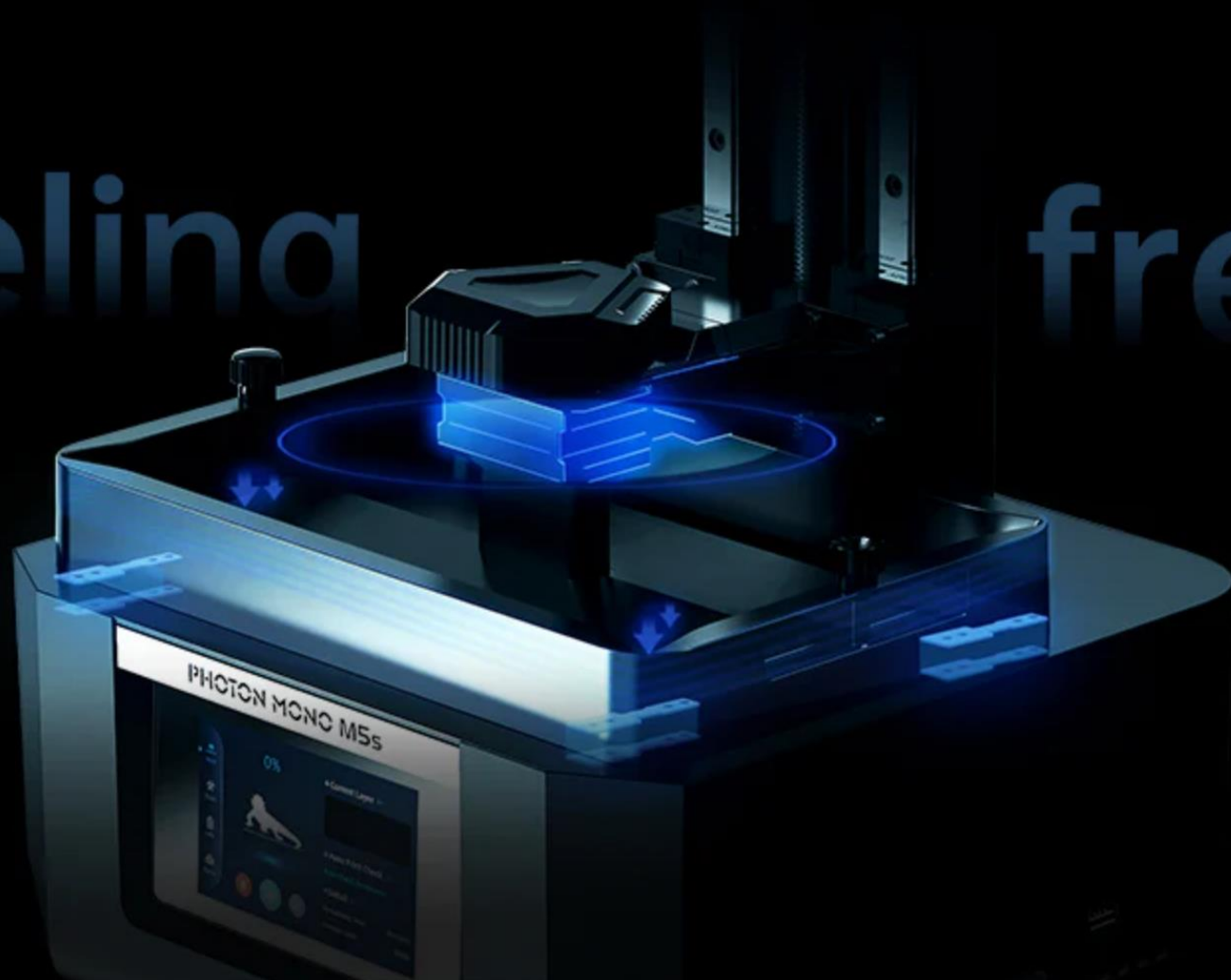
480:1

Contrast



Leveling

free



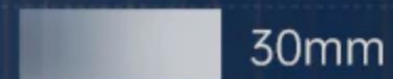


1 Hour Printing Test

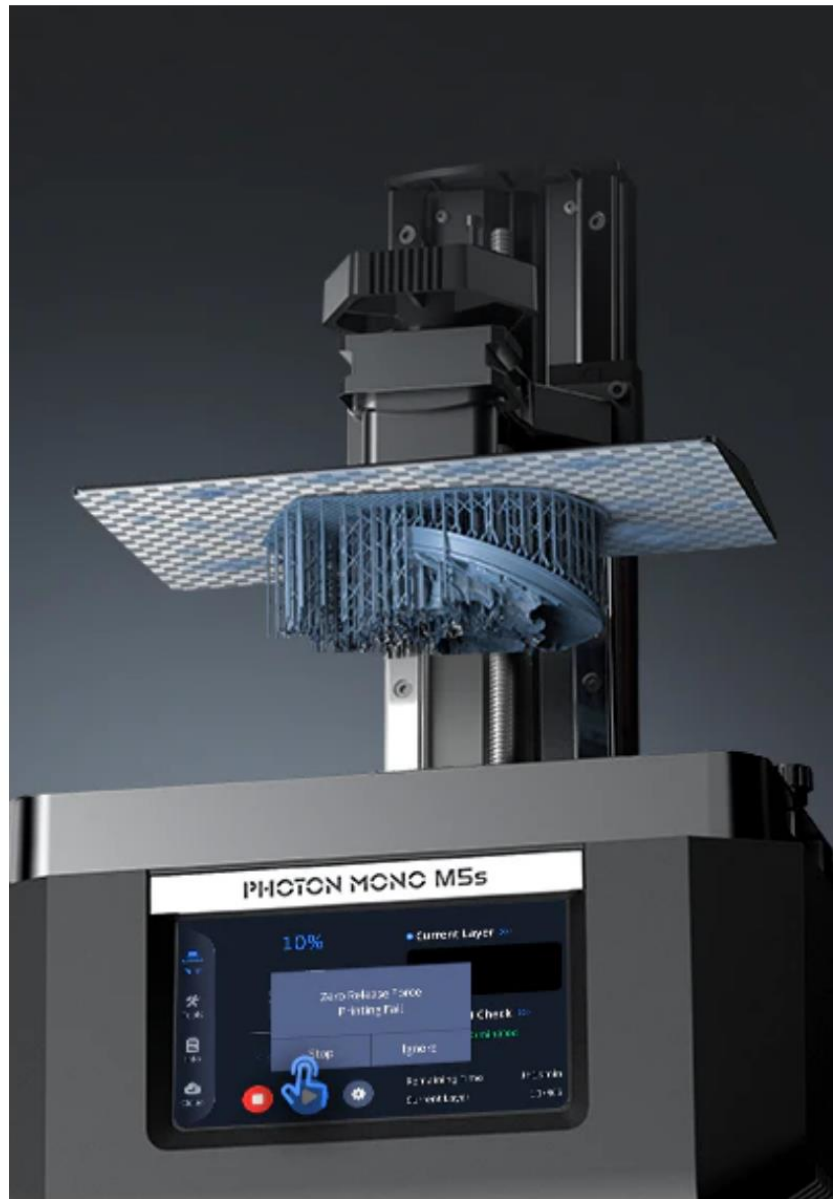
Ancubic Photon Mono M5s

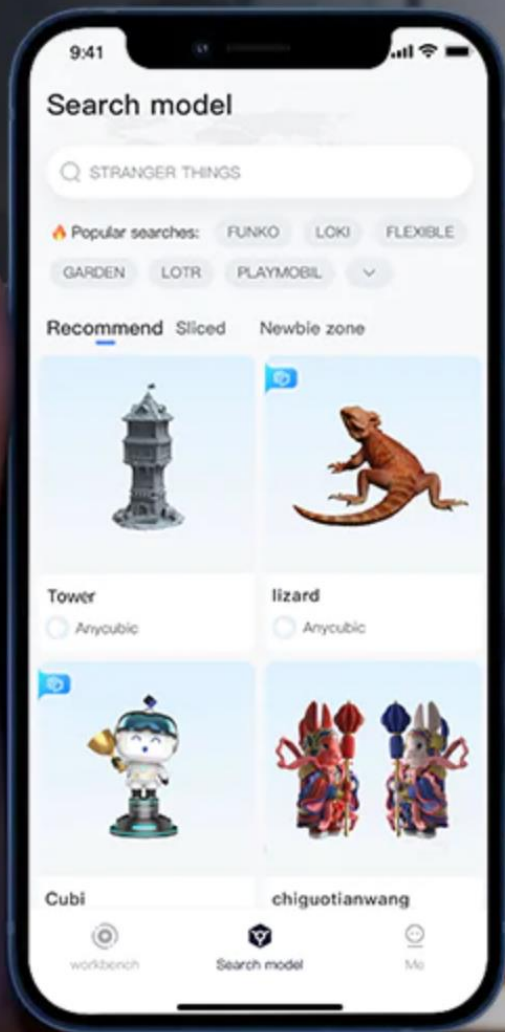


Others

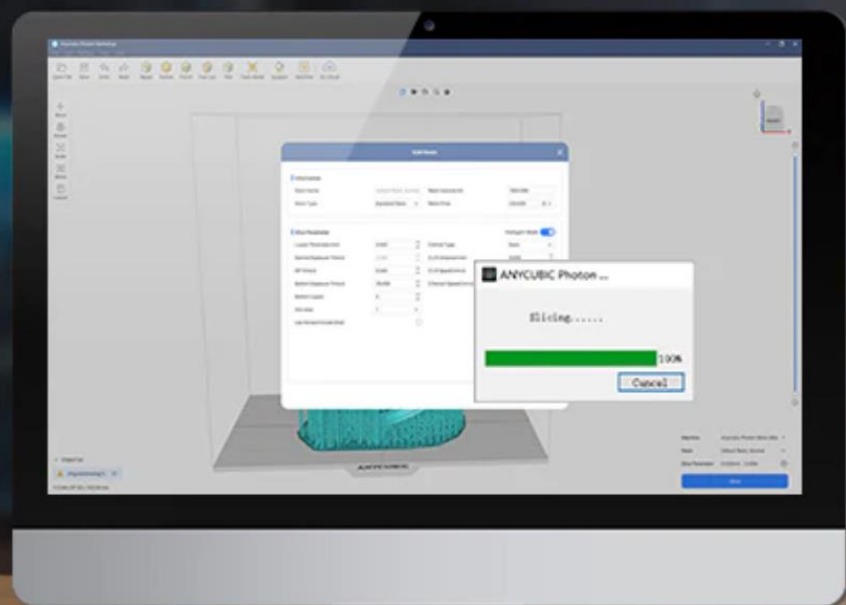


Average Printing Speed





Intelligent Mode



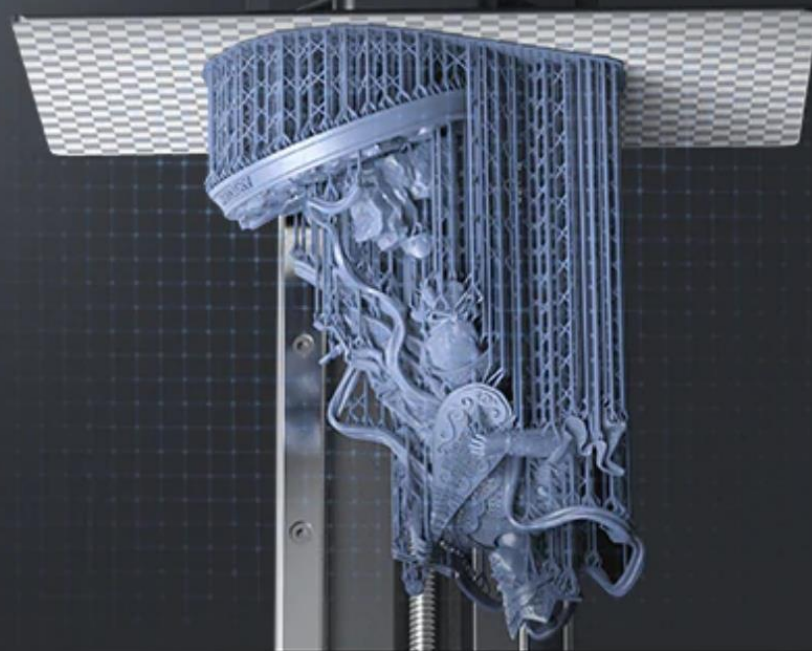
New support algorithm
and bottom valve



All-around
improvement



Professional
and easy to use



PHOTON MONO M5s





Models printed by Anycubic Photon Mono M5s

©loot studios



Models printed by Anycubic Photon Mono M5s

Anycubic Photon Mono M5s

Tech Specs

Machine Weight	19.6lb./8.9kg	Machine Dimensions	11.41x10.63x18.11in./ 290*270*460mm(HWD)
Printing Volume	190oz./5.4L	Printing Dimensions	7.87x8.58x4.84in./ 200x218x123mm(HWD)
Average Printing Speed	With high speed resin - 105mm/hr. or 4.13 in./hr. With general resin - 70mm/hr. or 2.76 in./hr.	Machine Leveling	Leveling-free
Light Source	LED matrix UV light source	Z Axis	Double liners with 10 µm
Resin Vat	Unibody design with scale lines	Exposure Screen	10.1" monochrome 12K(11,520 x 5,120px) resolution 480:1 contrast ratio 4.7 % light transmittance 2,000 hours typical lifespan
Build Platform	Laser engraving aluminum alloy	Control Panel	4.3" TFT touch-control
Removable Cover	Effectively blocks UV radiation	Oversized Protection Film	Replaceable anti-scratch film
Power Supply	100W rated power	Data Input	USB Type-A 2.0, WIFI

In The Box



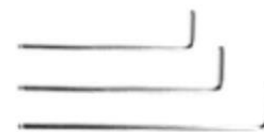
Anycubic Photon Mono M5s



Print Platform



Resin Vat



Tool Kit



Scraper



Gloves



Mask



Anti-scratch film kit



USB flash drive



Power adapter



Funnel



Instruction manual