

# AutoScan-DS-EX Pro

Outstanding Scan Speed

- Upgraded scan speed
- Dynamic&static articulator scan
- New all-in-one scan
- Modular design





## USER-FRIENDLY STRUCTURE

- Light weight and small footprint: only 5kg
- Open structure: easy to place different models

5<sup>kg</sup>

## EVEN FASTER SCAN SPEED

With increased scan speed, a single jaw scan can be finished in 12 seconds. The entire process of a separate-die order can be completed within 2 minutes and a non-separated-die order within 2.5 minutes.

Bite

8s



1-8Dies

13-21s



Single Jaw

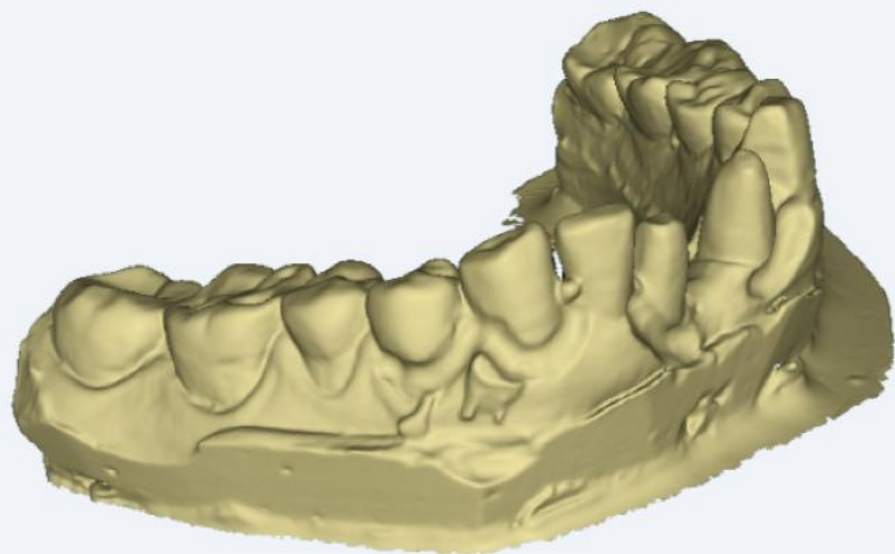
12s



Impression

58s



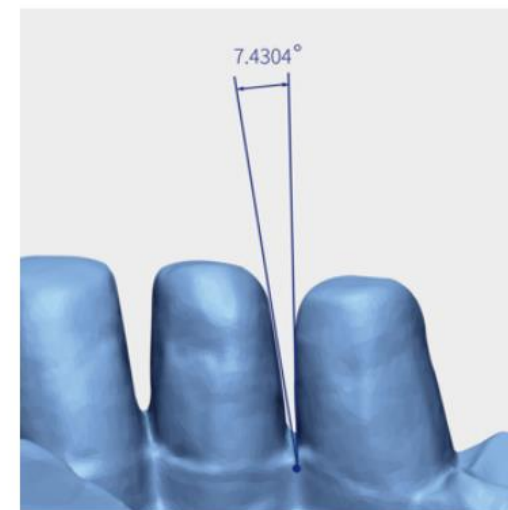
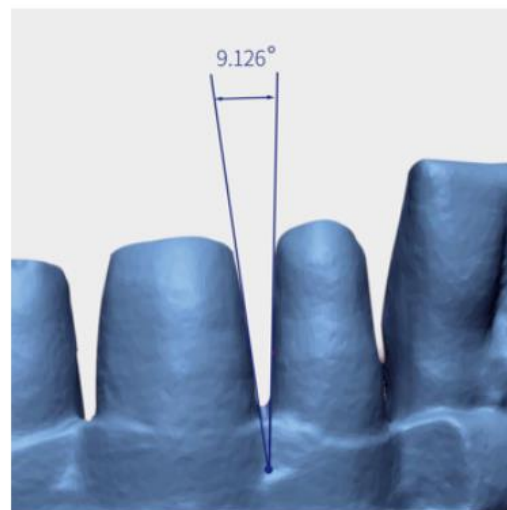
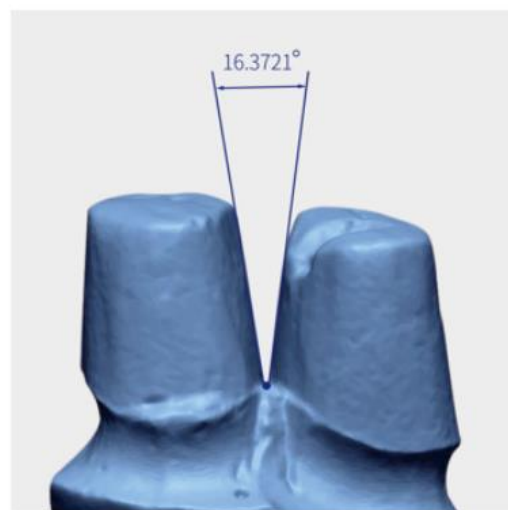
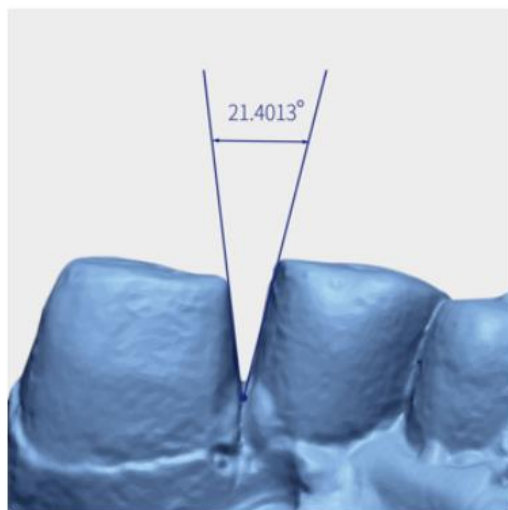


## INTELLIGENT ADD-SCAN

When it comes to gaps, the AutoScan-DS-EX Pro can compute an optimized scan path and rescan to fill the unscanned holes automatically. Users don't have to rescan manually.

# OPTIMIZED NON-SEPARATED MODEL SCAN

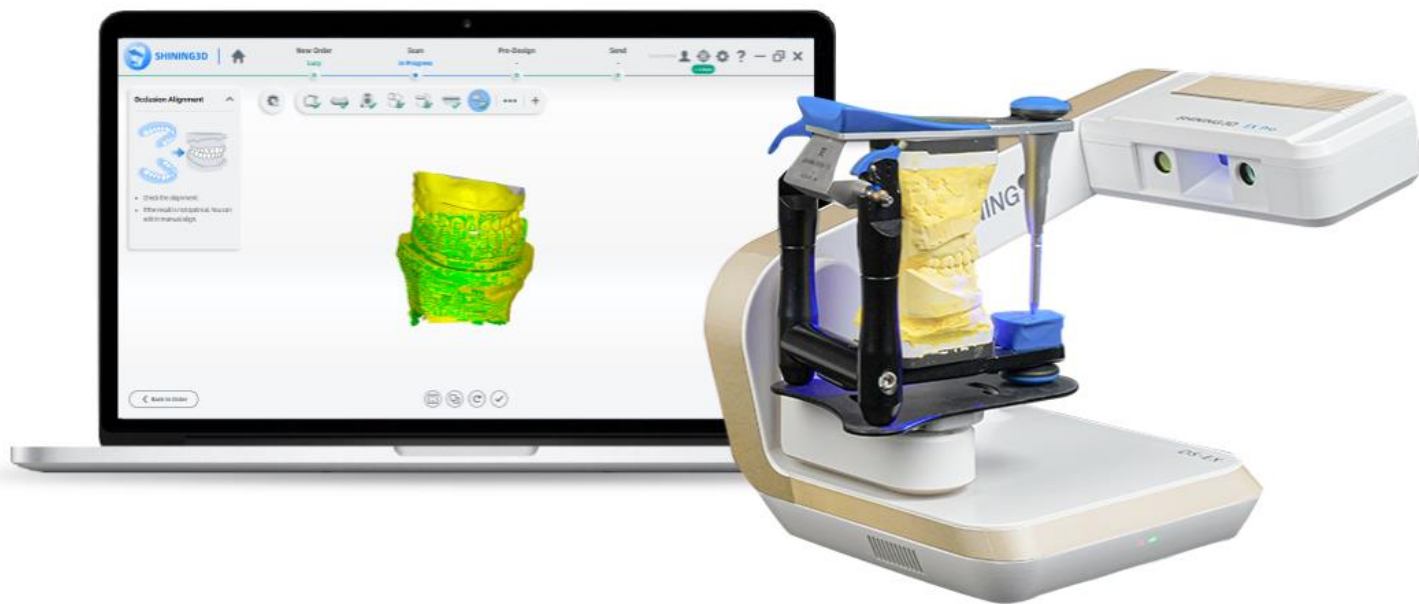
Intelligent path planning for non-separated model scan ensures optimum scan results and higher efficiency.



# FULL RANGE OF ARTICULATORS

The AutoScan-DS-EX Pro supports scanning multiple types of articulators on the market.





## STATIC & DYNAMIC ARTICULATOR SCAN

Apart from the existing static scanning mode, a new dynamic scanning mode is now available to capture the full relationship of both jaws and further improve precision of occlusion. This added feature is easy to operate and will result in greater efficiency.

# ALL-IN-ONE SCAN

This new all-in-one scan method allows scan of quadrant models and dies at the same time, which largely simplifies the scan process and improve the scan efficiency by almost 50%.

Conventional  
4 steps



1. Bite



2. Upper



3. Lower



4. Die

All-in-one  
2 steps



1. Bite



2. All-in-one





SHINING3D



New Order

Lucy

Scan

In Progress

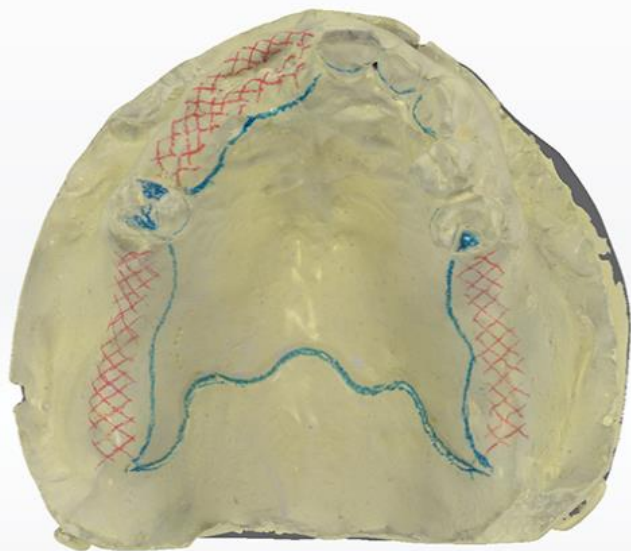
Pre-design

Send

Dental Clinic



+ 1 days



## TEXTURE SCAN

Clearly captures the textures and marks on the plaster model, assisting technicians to finish the digital partial framework design.

# VERSATILE APPLICATION

AutoScan-DS-EX Pro supports multiple dental scan applications, including wax-up, abutment, die, plaster model, impression, articulator and texture.



# TECHNICAL SPECIFICATIONS

---

Camera resolution	1.3 MP
Scan time	8 s for bite scan; 12 s for upper / lower jaw scan; 13 s for 1-4 dies scan; 21 s for 5-8 dies scan; 58 s for impression scan
Output format	STL / OBJ / PLY
Light source	Blue light
Dimensions	260x270x420 mm
Weight	5 kg
Interface	USB 3.0
Power supply	DC24 V